



Coconino National Forest
1824 S. Thompson Street
Flagstaff, Arizona 86001

NEWS RELEASE



Public Information: (928) 527-3600

PAO Brady Smith
DPAO George Jozens
Media Only: (928) 224-8306

FOR IMMEDIATE RELEASE

Museum Fire closure area to be reduced Friday

FLAGSTAFF, Ariz., Oct. 3, 2019 — The Coconino National Forest is reducing the size of the area closure for the Museum Fire on Friday (Oct.4) to allow for increased access and recreation on parts of Mt. Elden.

The Burned Area Emergency Response team has completed treatments to the land, including mulching with a helicopter in effort to stabilize the watershed and encourage recovery. Now that this important work is complete, the public will be allowed in additional areas of the burned area.

Although additional areas are open, the public is urged to use caution, as hazards still exist such as ash pits, rolling rocks, weakened trees, falling trees and possible floodwaters.

Some areas will remain closed that pose a continued and increased risk to visitors. These areas will be re-evaluated after the winter season to see what risks can be mitigated before opening to the public.

Portions of Forest Road 789 and FR 6353 marking the restricted-area boundary are OPEN to *non-motorized* use only. Elden Lookout Road (FR 557) is closed to all traffic where it intersects with the Arizona National Scenic Trail. Please see the [official closure order and map](#) for details.

The following trails will be OPEN:

- Arizona National Scenic Trail (ANST)
- Heart Trail
- Little Bear Trail
- Little Gnarly
- Lower Oldham Trail from Buffalo Park to the ANST junction

- Rocky Ridge Trail from ANST to Schultz Creek Trail
- Schultz Loop Trail
- Sunset Trail from the intersection of Schultz Tank to Little Bear Trail

The following trails will remain CLOSED:

- Brookbank Trail (entire trail)
- Lower Oldham, from ANST to Brookbank Trail
- Rocky Ridge Trail, from ANST to Brookbank Trail
- Sunset Trail, from Little Bear Trail to Elden Lookout Trail
- Upper Oldham Trail (entire trail)

For more information about the Mt. Elden area, please call the Flagstaff Ranger District at 928-526-0866.

###



USDA is an equal opportunity provider, employer and lender.



**UNITED STATES DEPARTMENT OF AGRICULTURE
FOREST SERVICE
COCONINO NATIONAL FOREST
FLAGSTAFF RANGER DISTRICT
TEMPORARY CLOSURE DUE TO THE MUSEUM FIRE
(For Public Safety)**

PROHIBITIONS

Pursuant to 16 U.S.C. § 551 and 36 C.F.R. § 261.50(a), the following acts are prohibited within the area described in this Order (the “Restricted Area”), and as depicted on the attached map, hereby incorporated into this order as Exhibit A, all within the within the boundaries of the Flagstaff Ranger District of the Coconino National Forest, Coconino County, Arizona (AZ):

1. Going into or being upon the Restricted Area. 36 C.F.R. § 261.53(e).

EXEMPTIONS

Pursuant to 36 C.F.R. § 261.50(e), the following persons are exempt from this Order:

1. Persons with a written Forest Service authorization specifically exempting them from the effect of this Order.
2. Any Federal, State, or local officer, or member of an organized rescue or fire fighting force in the performance of an official duty.

RESTRICTED AREA

The Restricted Area includes all National Forest System lands, roads, and trails (unless otherwise indicated below) within the boundary starting at the intersection of the Arizona National Scenic Trail (# 87) and Forest Road (FR) 557 (Elden Lookout Road) (located in the northeastern quarter section of Township 22 North and Range 7 East, Section 34), then following Arizona National Scenic Trail west to the intersection with Rocky Ridge Trail (# 153), then following Rocky Ridge Trail west to the section line between Sections 33 and 34 in Township 22 North and Range 7 East, then following the section line north to the junction with FR 789 in Dry Lake Hills, then following FR 789 (Little Gnarly) in a northeasterly direction to the private land boundary in Township 22 North and Range 7 East, Section 27, then following the private land boundary in a general northeasterly direction back to the intersection with FR 789, then following FR 789 in a northerly direction to the intersection with Schultz Loop Trail (# 152A), then following in a northerly direction along Schultz Loop Trail to the intersection with FR 6353 (Climb 3), then following FR 6353 in an easterly direction to the junction with Sunset Trail (# 23), then following Sunset Trail in a southerly direction to the intersection with Elden Lookout Trail (# 23), then following Elden Lookout Trail in a westerly direction to its terminus at Elden Lookout Tower, then following south for 500 feet to the section line between

Township 21 and 22 North, then following the section line west to the intersection with Lower Oldham Trail (# 1), then following Lower Oldham Trail in a northerly direction to the intersection with the Arizona National Scenic Trail, then following the Arizona National Scenic Trail back to the point of beginning at the intersection of FR 557.

NOTE: The following trails marking the Restricted Area boundary are **OPEN**: Arizona National Scenic Trail (#87), Rocky Ridge Trail (#153), Schultz Loop Trail (# 152A), Sunset Trail (# 23) from the intersection of FR 6353 to Little Bear Trail (#112), Elden Lookout Trail (#23), and Lower Oldham Trail (#1).

The portions of FR 789 and FR 6353 marking the Restricted Area boundary are **OPEN** to *non-motorized use* only.

Sunset Trail is **CLOSED** from Little Bear Trail (#112) to Elden Lookout Trail (#23).

PURPOSE

The purpose of this Order is to provide for the public's health and safety due to fire activity in the Restricted Area for the management of the Museum Fire, and also to protect assigned personnel engaging in wildland firefighting operations.

IMPLEMENTATION

1. This Order will be in effect beginning at 8:00 AM, September 28, 2019, and shall remain in effect until October 1st, 2020, or until rescinded, whichever comes first.
2. A map identifying the Restricted Area is attached and is made part of this order as Exhibit A.
3. Any violation of this prohibition is punishable as a class B misdemeanor by a fine of not more than \$5,000 for an individual, or \$10,000 for an organization and/or imprisonment for not more than six (6) months or both (*see* 16 U.S.C. § 551, 18 U.S.C. § 3571(b)(6), 18 U.S.C. § 3581 (b)(7)).
4. Further information regarding this Order may be obtained at the Flagstaff Ranger District Office at 5075 US-89 in Flagstaff, AZ, telephone number (928-526-0866), and at Coconino National Forest Supervisors Office at 1824 S. Thompson Dr. in Flagstaff, AZ, telephone number (928-527-3600).
5. This Order supersedes any previous Orders prohibiting the same acts covered by this Order.

Done at Flagstaff, AZ this 3rd day of October, 2019.

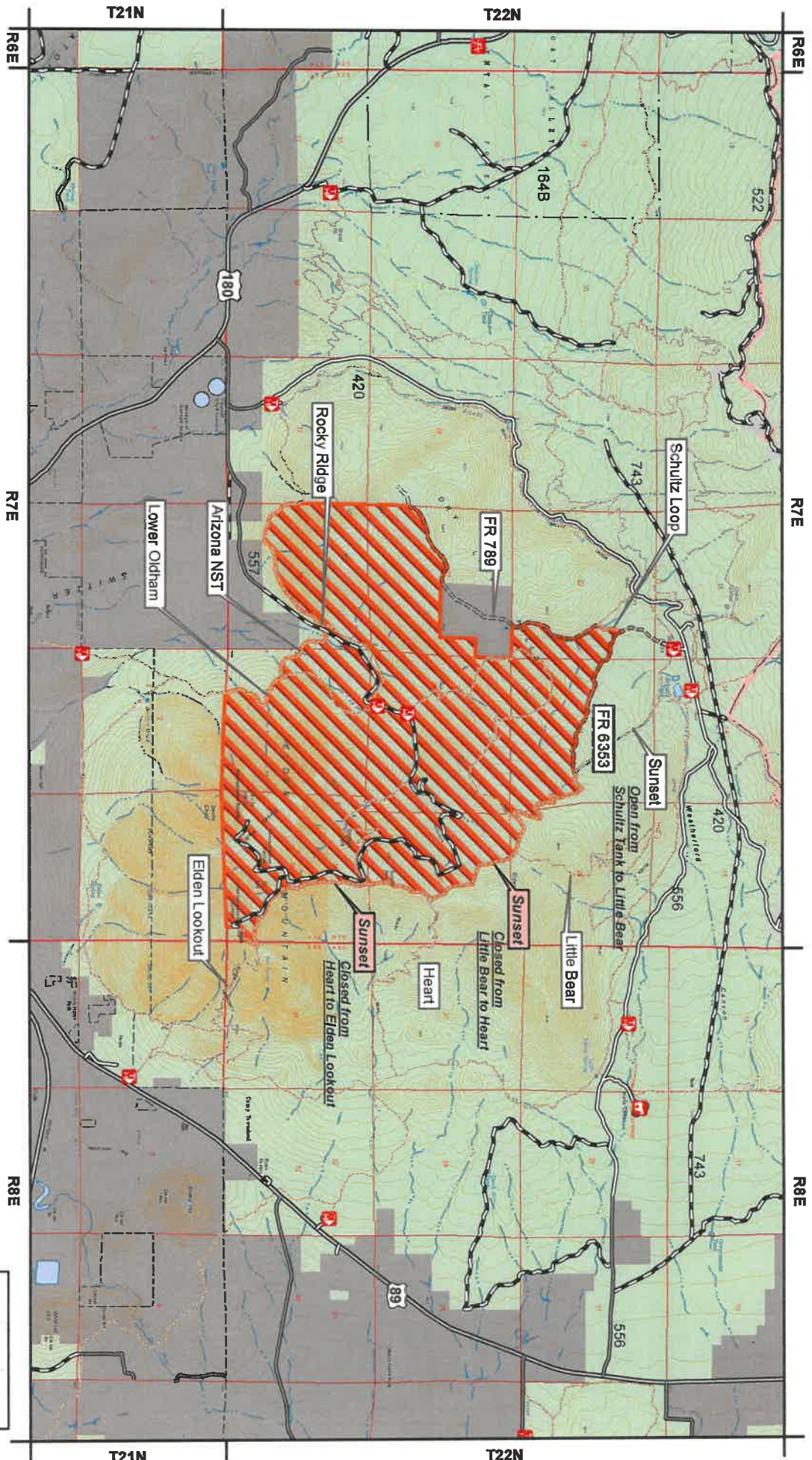
Laura Jo West

LAURA JO WEST
Forest Supervisor
Coconino National Forest



Museum Closure Area - Order Number: 03-04-19-23 F
Coconino National Forest - Flagstaff Ranger District

Exhibit: A



Forest Order Information
 Order Number: 03-04-19-23 F
 Start Date: October 4, 2019
 End Date: October 1, 2020



Disclaimer
 The USDA Forest Service makes no warranty, expressed or implied regarding the data displayed on this map, and reserves the right to correct, update, modify, or replace this information without notification.

